


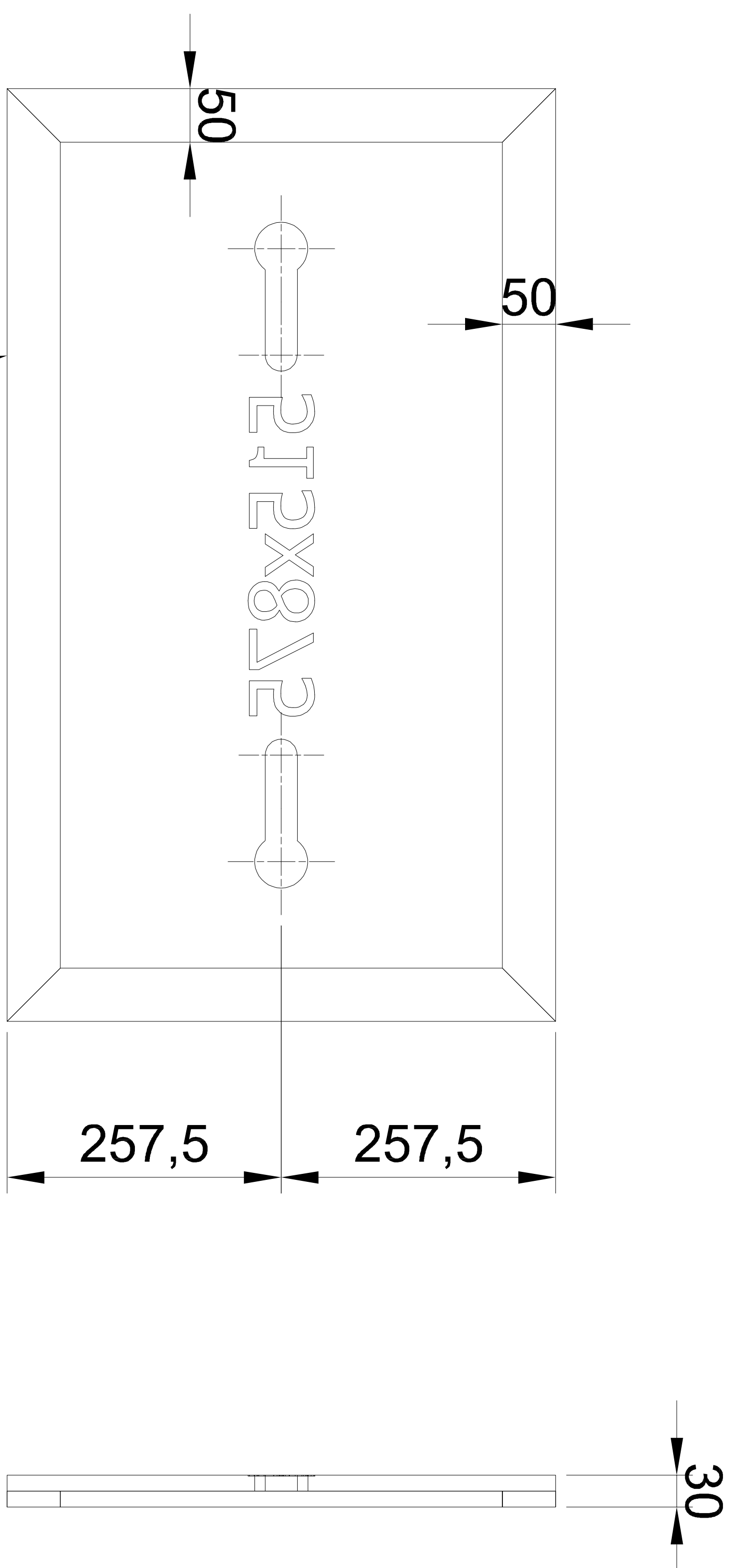
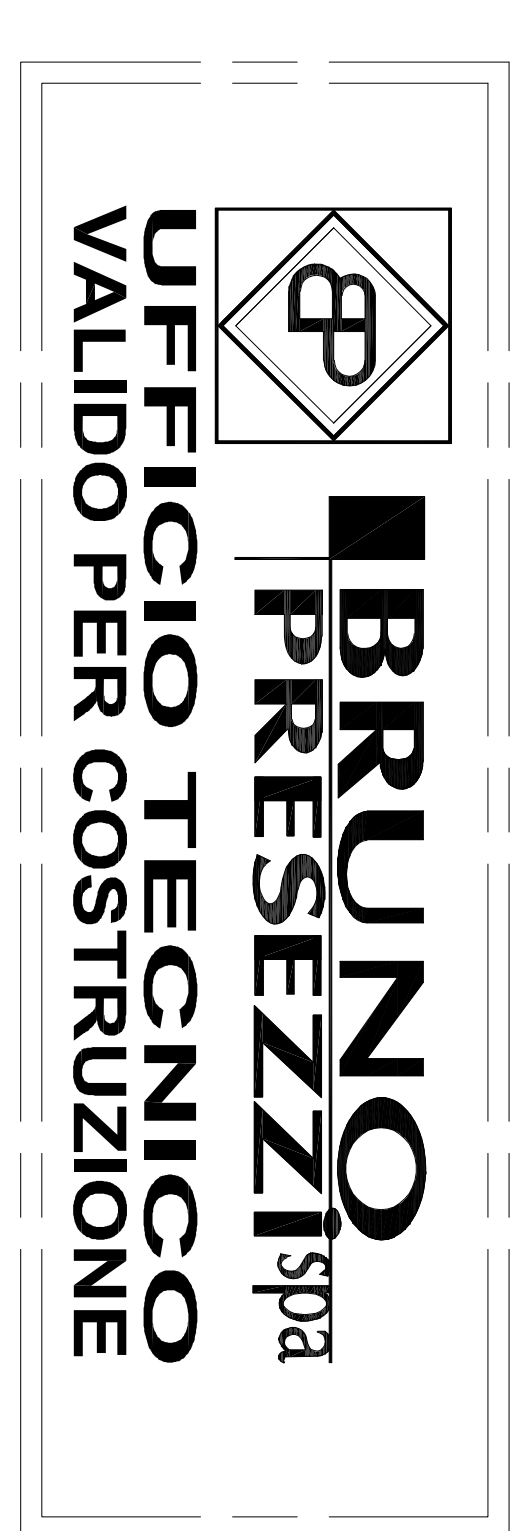
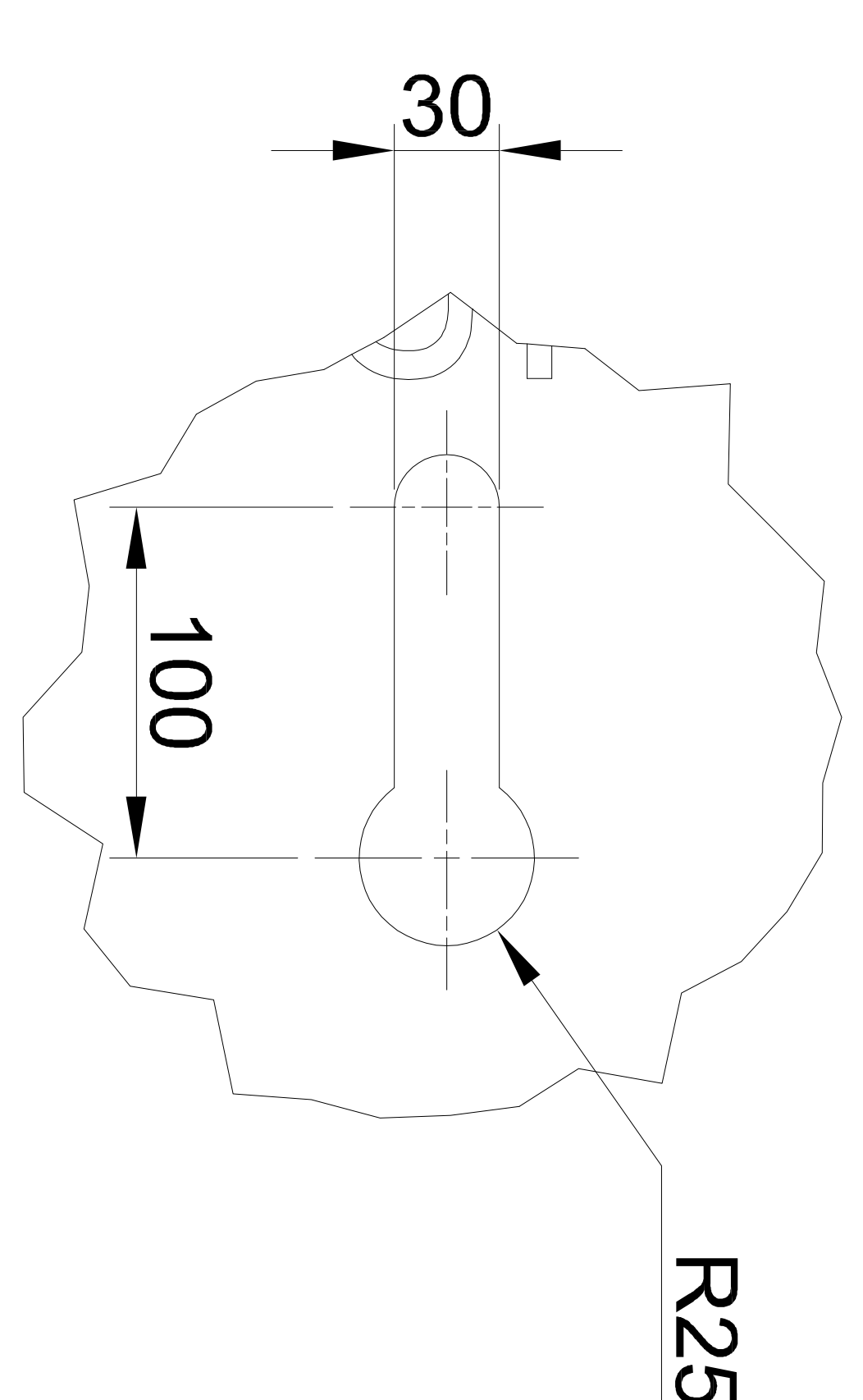
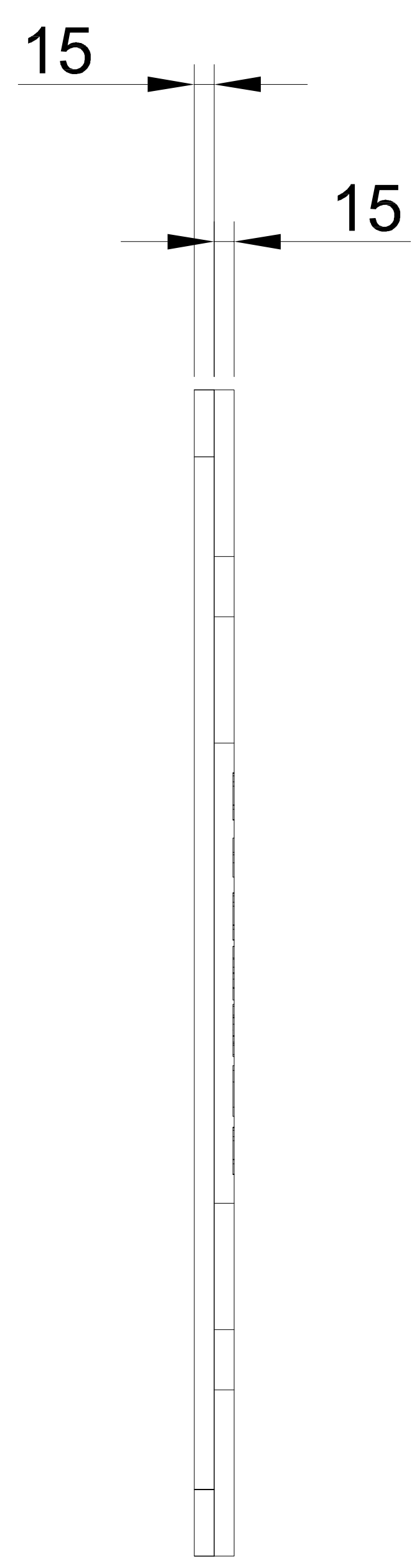
6													5					4				
GENERAL MACHINING TOLERANCE - GRADE MEDIUM (UNI EN ISO 22768)													REMOVE SHARP EDGES TOGLIERE SPIGOLI VIVI									
TOLLERANZA GENERALE DI LAVORAZIONE - GRADO MEDIO (UNI EN ISO 22768)																						
Size	above	Gruppo di dimensioni	oltre	-	6	30	120	400	1000	2000	4000	Chamfer 0.5x45° R=0.5 Smusso										
	up to		fino a	6	30	120	400	1000	2000	4000												
Tolerance	Scostamenti			±0.1	±0.2	±0.3	±0.5	±0.8	±1.2	±2	±3											

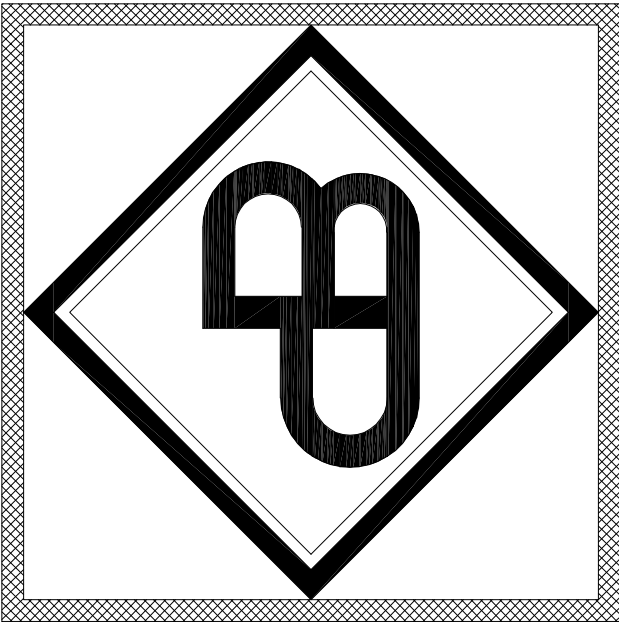
NORME GENERALI DI SALDATURA
GENERAL RULES FOR WELDED JOINTS

PREPARAZIONE DEI LEMBI SECONDO "DIN 1912"
EDGE PREPARATION FOR WELDING ACCORDING TO

DOVE NON ALTRIMENTI INDICATO - $A = 0,7$
DELLO SPESSORE MINIMO DA COLLEGARE
WHERE NOT SPECIFIED - $A = 0,7$
OF THE MINIMUM THICKNESS TO BE JOINT




$$A(1:5)$$


		06/10/2025			
DIS. ASSIEME		COMMESSA N.		DATA	
				Q.TA'	
S.P.		R.V.		R.V.	
Disegnato		Verificato		Autorizzato	
Descrizione:				Materiale	
				Massa	
<div>Lamiera Sp.15+15 (Sheet Metal Sp.15+15)</div>					
				Disegno N.	
				Scala: 1 : 10	
				Revisione: 0	
60-26-00B-116		Foglio: 1 di 1			
<div>A termine di legge e' rigorosamente vietato riprodurre o comunicare a terzi il contenuto del presente disegno</div>					
<div>Via per Ornago 8 - BURAGO DI MOLGORA - C.A.P. 20875 (MB) - ITALY Tel. 039/655021 FAX 039/6081373 - e-mail: bruno.pressezzi@brunopressezzi.com</div>					
A3					